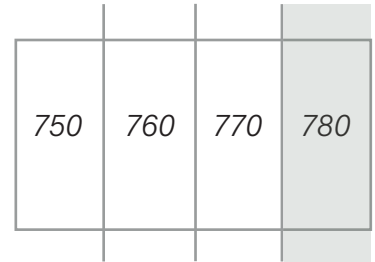


PROVENCHER
BROSSARD

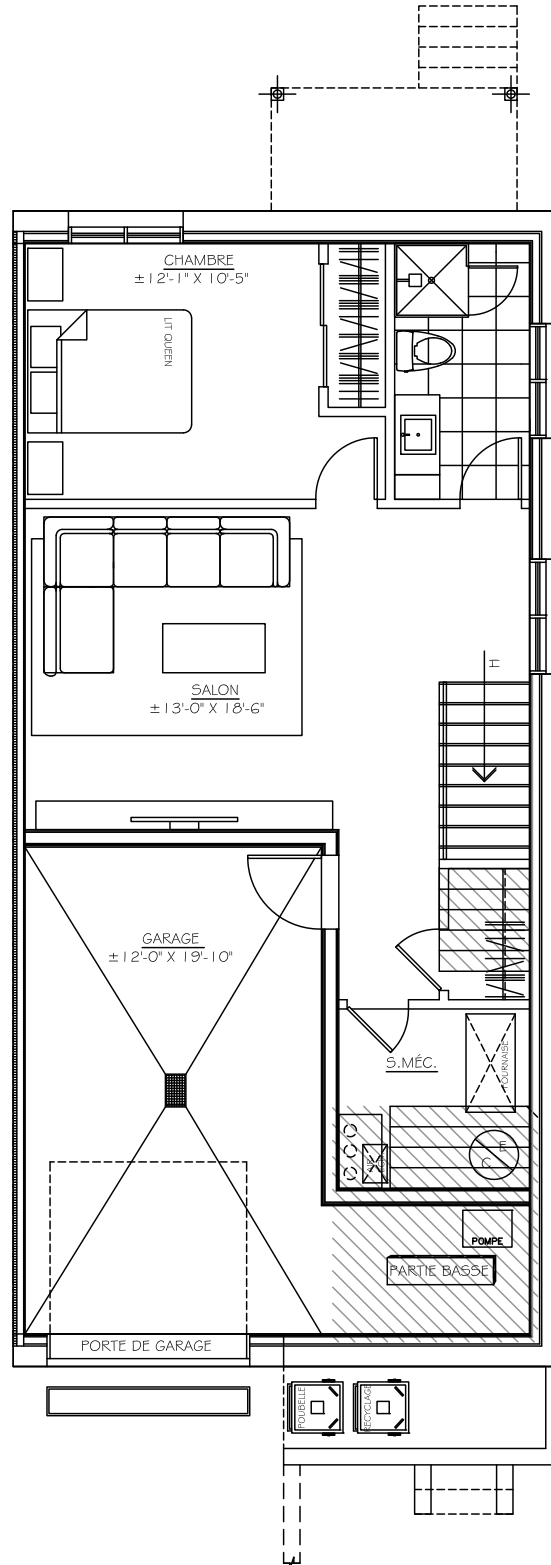
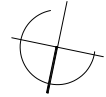
UNITÉ 780 - UNIT 780

GARAGE: 239 pi² - SOUS-SOL: 811 pi²

GARAGE: 239 sq. ft. - BASEMENT: 811 sq. ft.



BOUL. PROVENCHER BLVD.



he

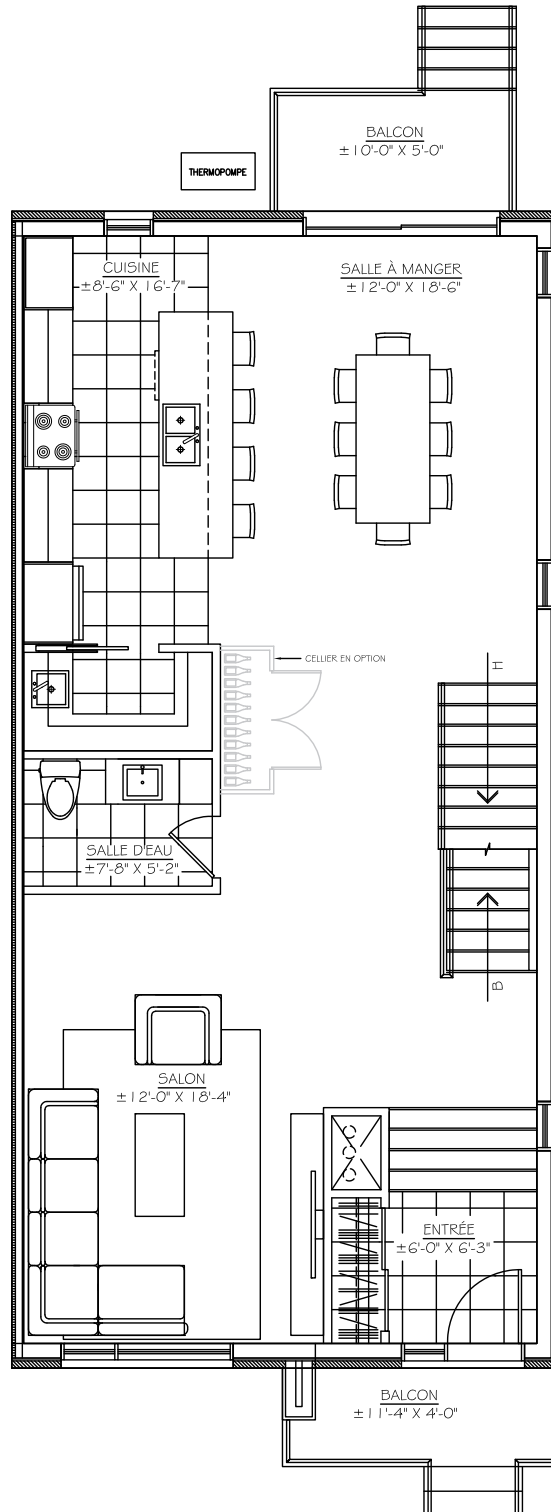
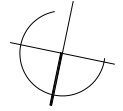
BOUL. PROVENCHER BLVD.

UNITÉ 780 - UNIT 780

REZ-DE-CHAUSSÉE: 1050 pi²
FIRST FLOOR: 1050 sq. ft.

750	760	770	780
-----	-----	-----	-----

BOUL. PROVENCHER BLVD.



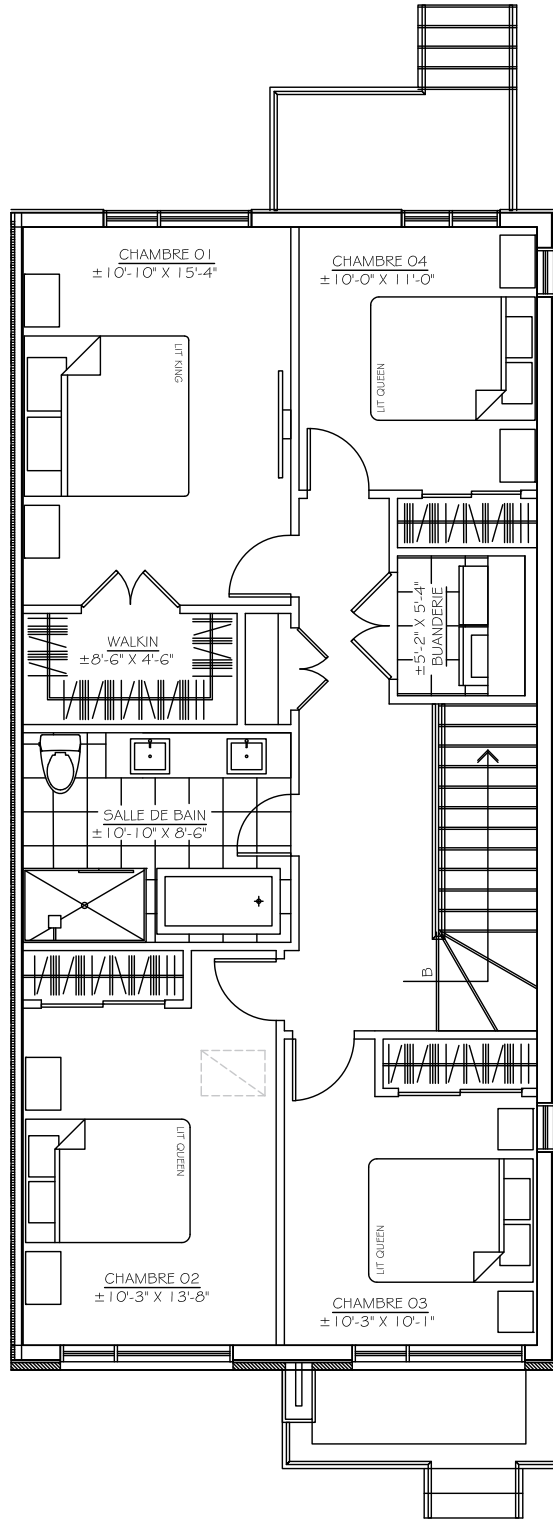
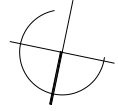
he

UNITÉ 780 - UNIT 780

ÉTAGE - 4 CHAMBRES 1048 pi²
SECOND FLOOR - 4 BEDROOMS 1048 sq. ft.

750	760	770	780
-----	-----	-----	-----

BOUL. PROVENCHER BLVD.



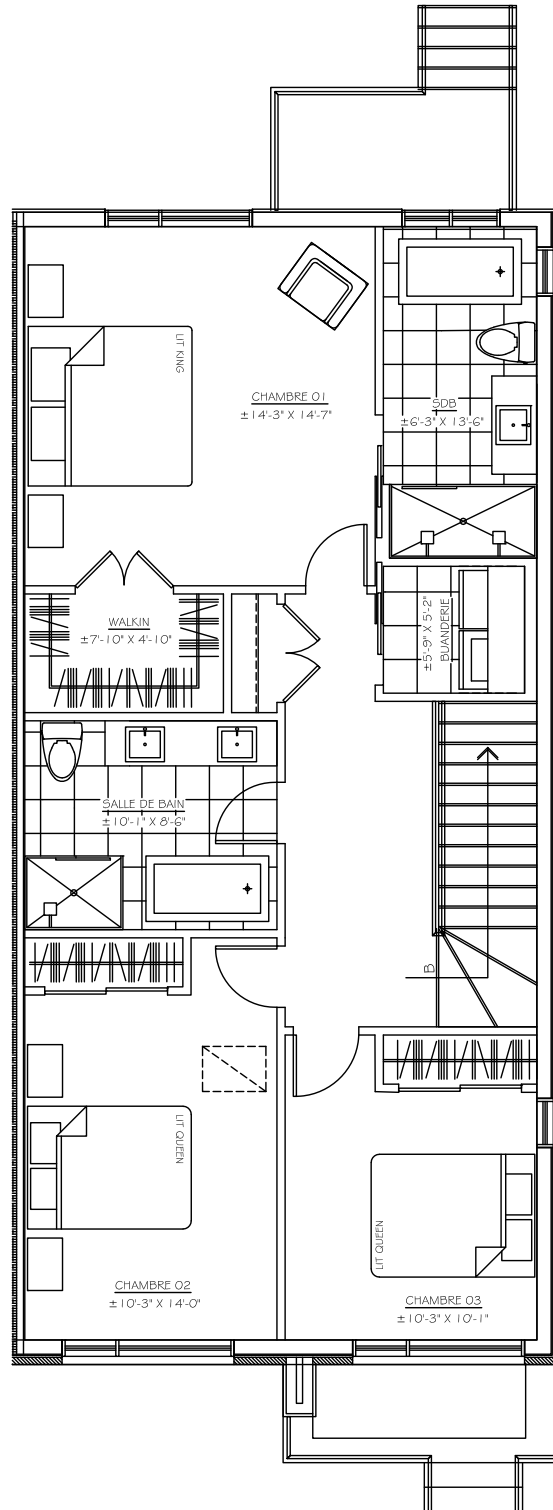
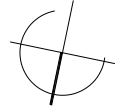
he

UNITÉ 780 - UNIT 780

ÉTAGE - 3 CHAMBRES (\$) 1048 pi²
 SECOND FLOOR - 3 BEDROOMS (\$) 1048 sq. ft.

750	760	770	780
-----	-----	-----	-----

BOUL. PROVENCHER BLVD.



he