

PROVENCHER
BROSSARD

UNITÉ 750 - UNIT 750

GARAGE: 239 pi² - SOUS-SOL: 811 pi²

GARAGE: 239 sq. ft. - BASEMENT: 811 sq. ft.

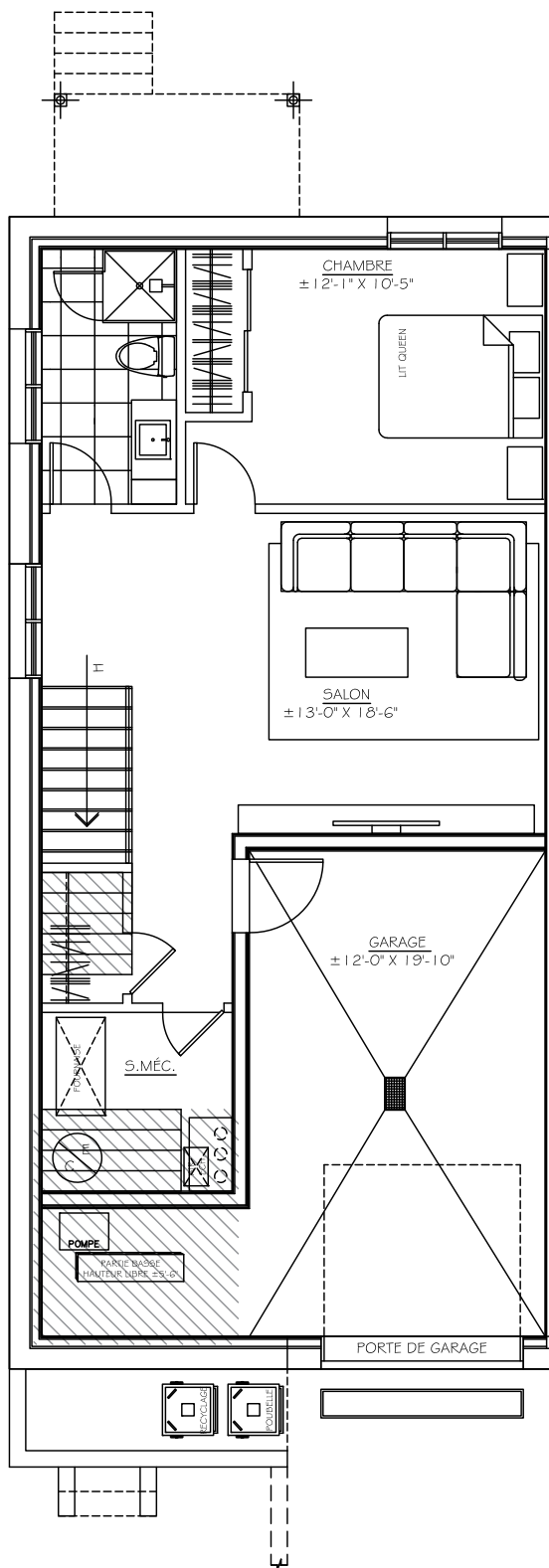
750

760

770

780

BOUL. PROVENCHER BLVD.



he

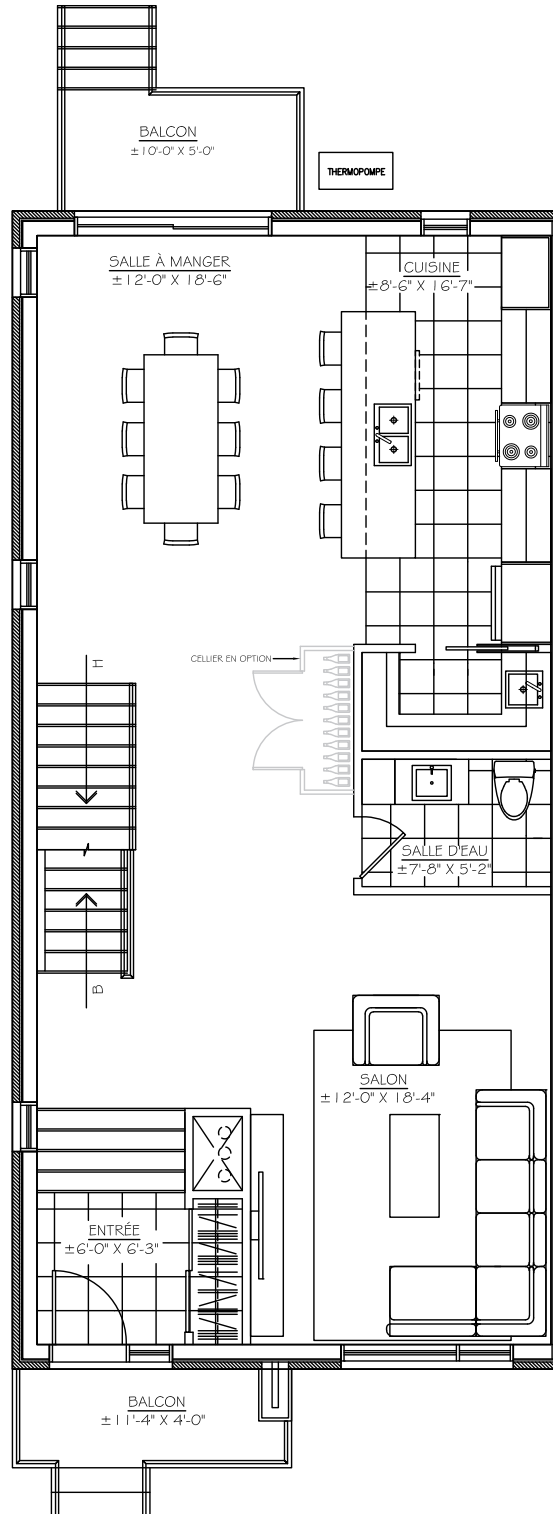
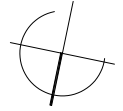
BOUL. PROVENCHER BLVD.

UNITÉ 750 - UNIT 750

REZ-DE-CHAUSSÉE: 1050 pi²
FIRST FLOOR: 1050 sq. ft.

750	760	770	780
-----	-----	-----	-----

BOUL. PROVENCHER BLVD.



he

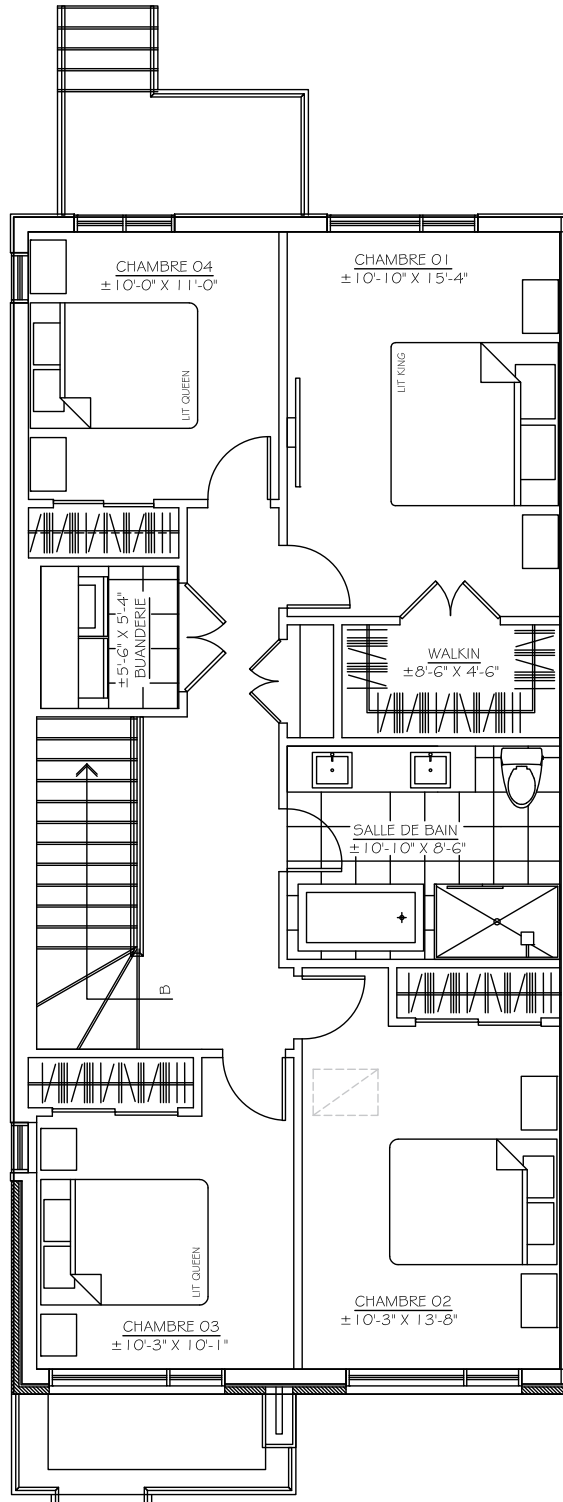
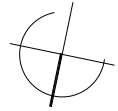
PROVENCHER
BROSSARD

UNITÉ 750 - UNIT 750

ÉTAGE - 4 CHAMBRES 1044 pi²
SECOND FLOOR - 4 BEDROOMS 1044 sq. ft.

750	760	770	780
-----	-----	-----	-----

BOUL. PROVENCHER BLVD.



he

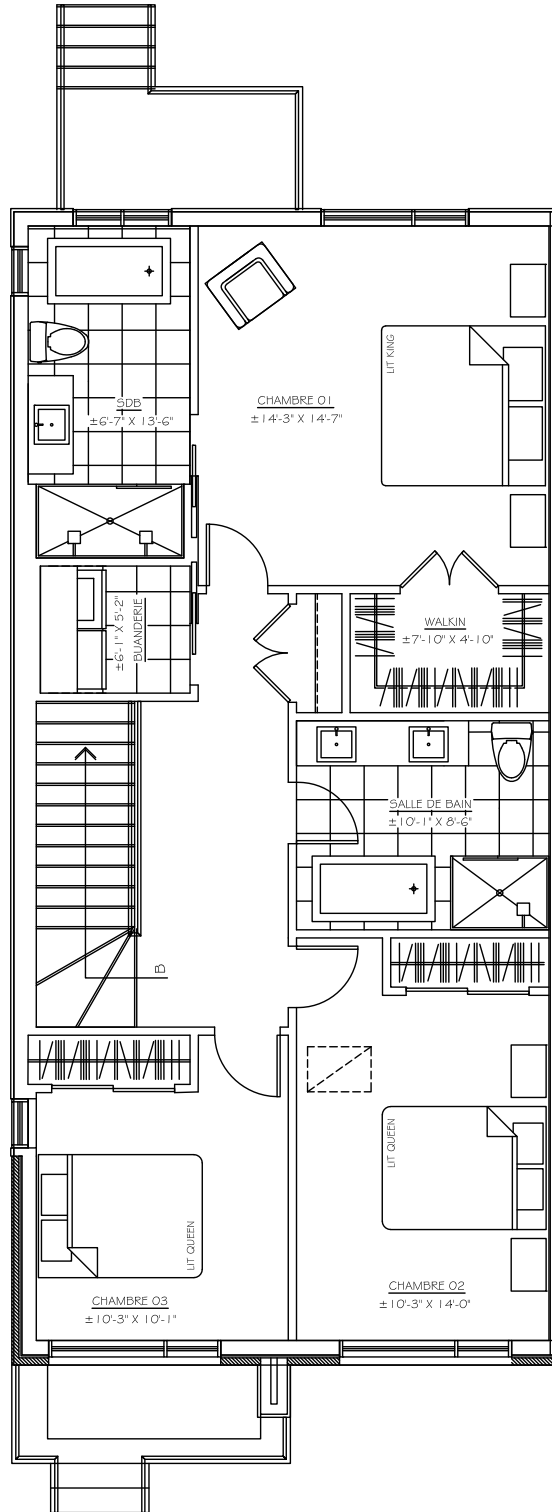
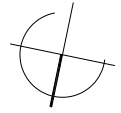
BOUL. PROVENCHER BLVD.

UNITÉ 750 - UNIT 750

ÉTAGE - 3 CHAMBRES (\$) 1044 pi²
 SECOND FLOOR - 3 BEDROOMS (\$) 1044 sq. ft.

750	760	770	780
-----	-----	-----	-----

BOUL. PROVENCHER BLVD.



he