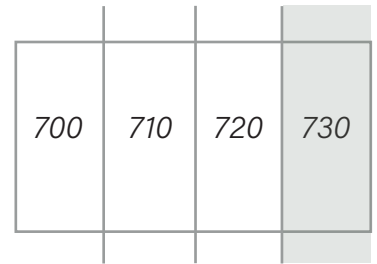


PROVENCHER
BROSSARD

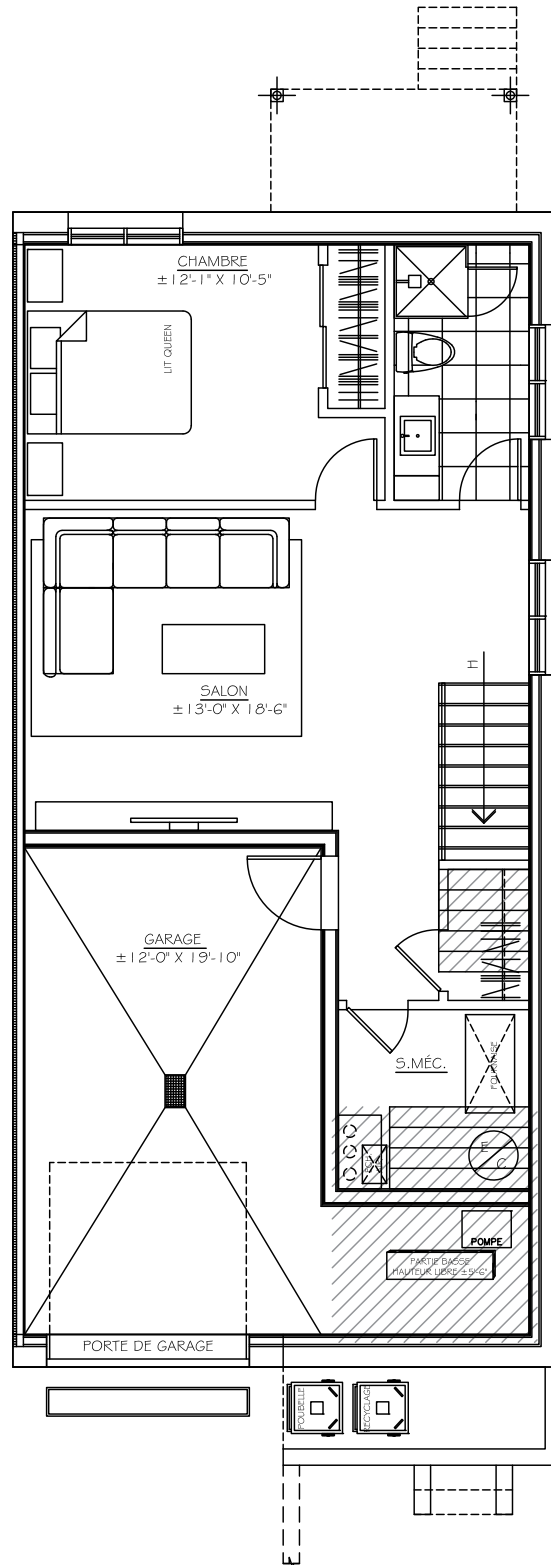
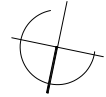
UNITÉ 730 - UNIT 730

GARAGE: 239 pi² - SOUS-SOL: 811 pi²

GARAGE: 239 sq. ft. - BASEMENT: 811 sq. ft.



BOUL. PROVENCHER BLVD.

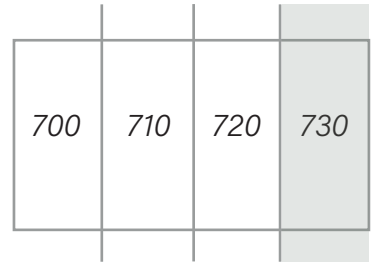


he

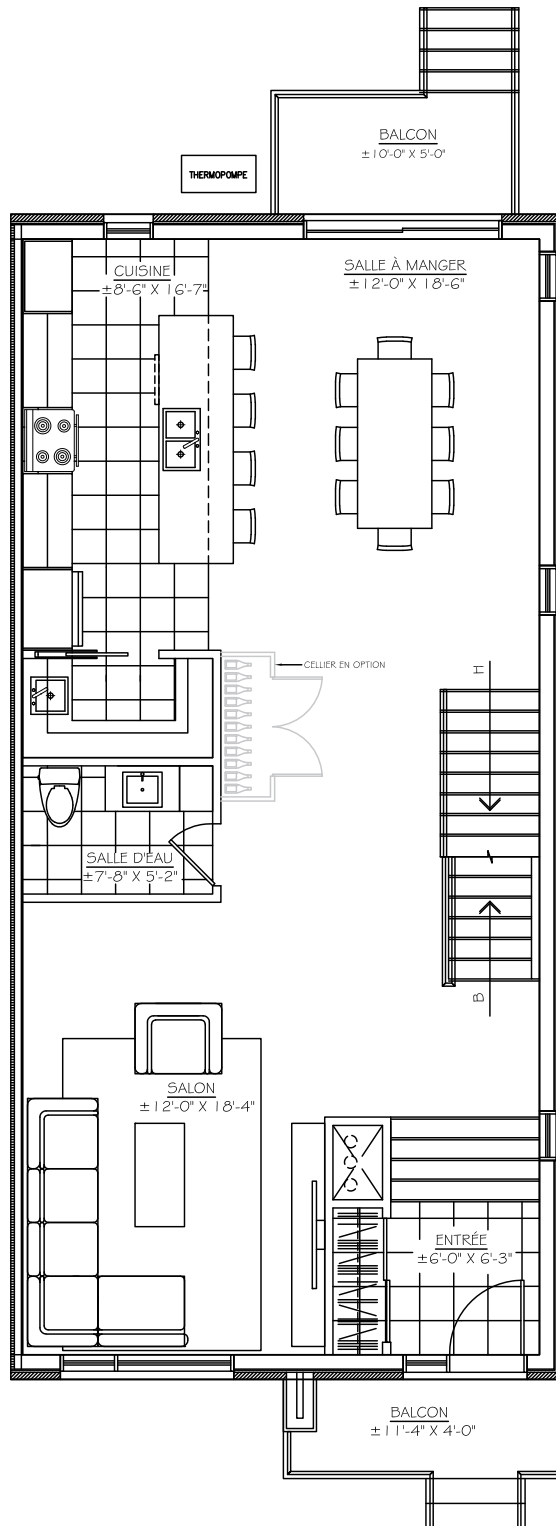
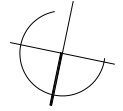
BOUL. PROVENCHER BLVD.

UNITÉ 730 - UNIT 730

REZ-DE-CHAUSSÉE: 1050 pi²
FIRST FLOOR: 1050 sq. ft.



BOUL. PROVENCHER BLVD.



he

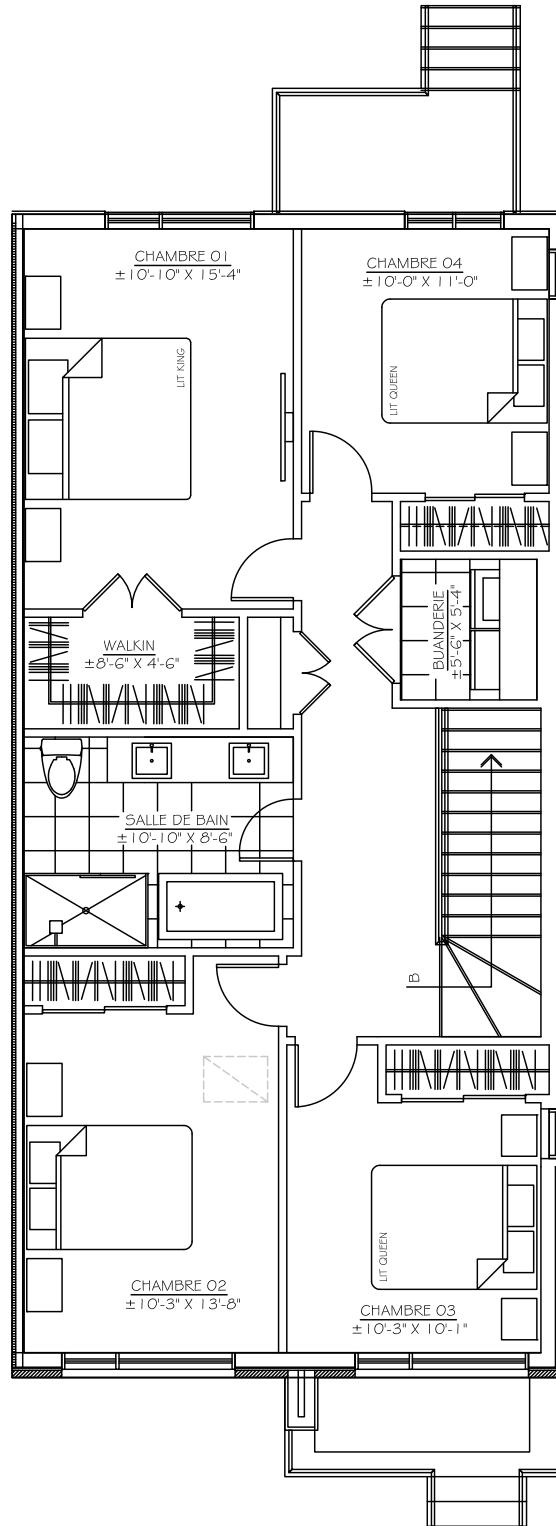
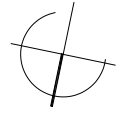
BOUL. PROVENCHER BLVD.

UNITÉ 730 - UNIT 730

ÉTAGE - 4 CHAMBRES 1044 pi²
SECOND FLOOR - 4 BEDROOMS 1044 sq. ft.

700	710	720	730
-----	-----	-----	-----

BOUL. PROVENCHER BLVD.



he

UNITÉ 730 - UNIT 730

ÉTAGE - 3 CHAMBRES (\$) 1044 pi²
SECOND FLOOR - 3 BEDROOMS (\$) 1044 sq. ft.

700	710	720	730
-----	-----	-----	-----

BOUL. PROVENCHER BLVD.

