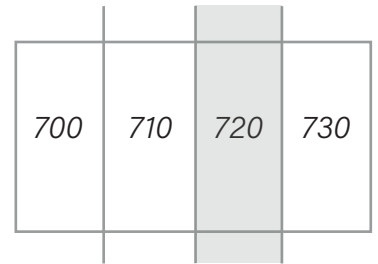
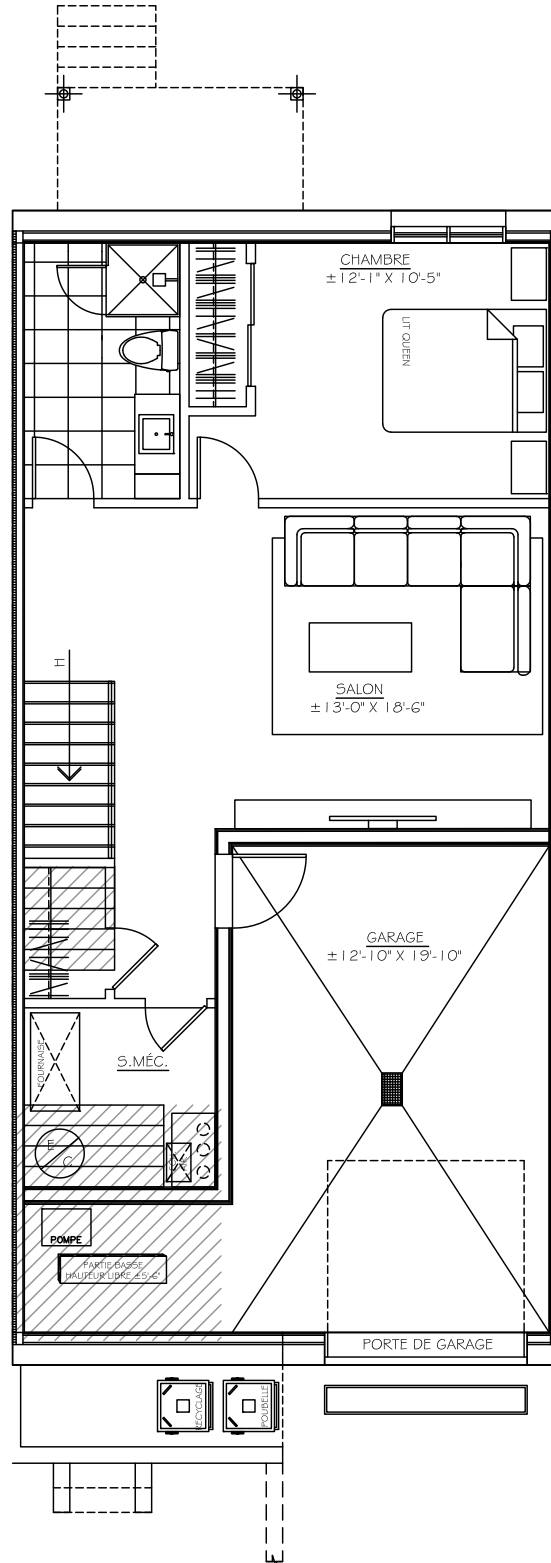
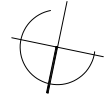


UNITÉ 720 - UNIT 720

GARAGE: 256 pi² - SOUS-SOL: 794 pi²
GARAGE: 256 sq. ft. - BASEMENT: 794 sq. ft.



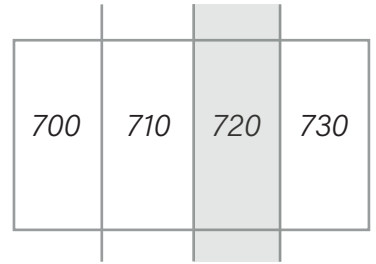
BOUL. PROVENCHER BLVD.



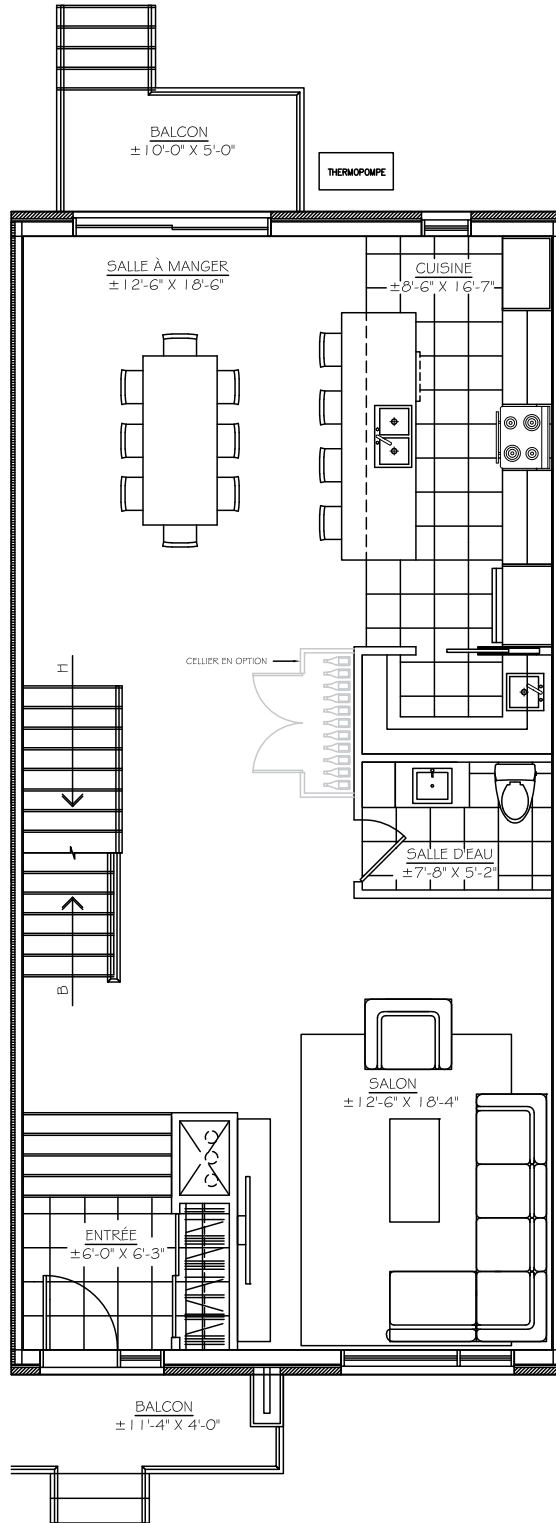
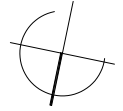
he

UNITÉ 720 - UNIT 720

REZ-DE-CHAUSSÉE: 1050 pi²
FIRST FLOOR: 1050 sq. ft.



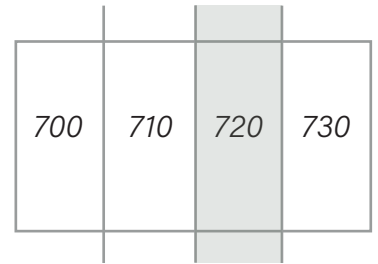
BOUL. PROVENCHER BLVD.



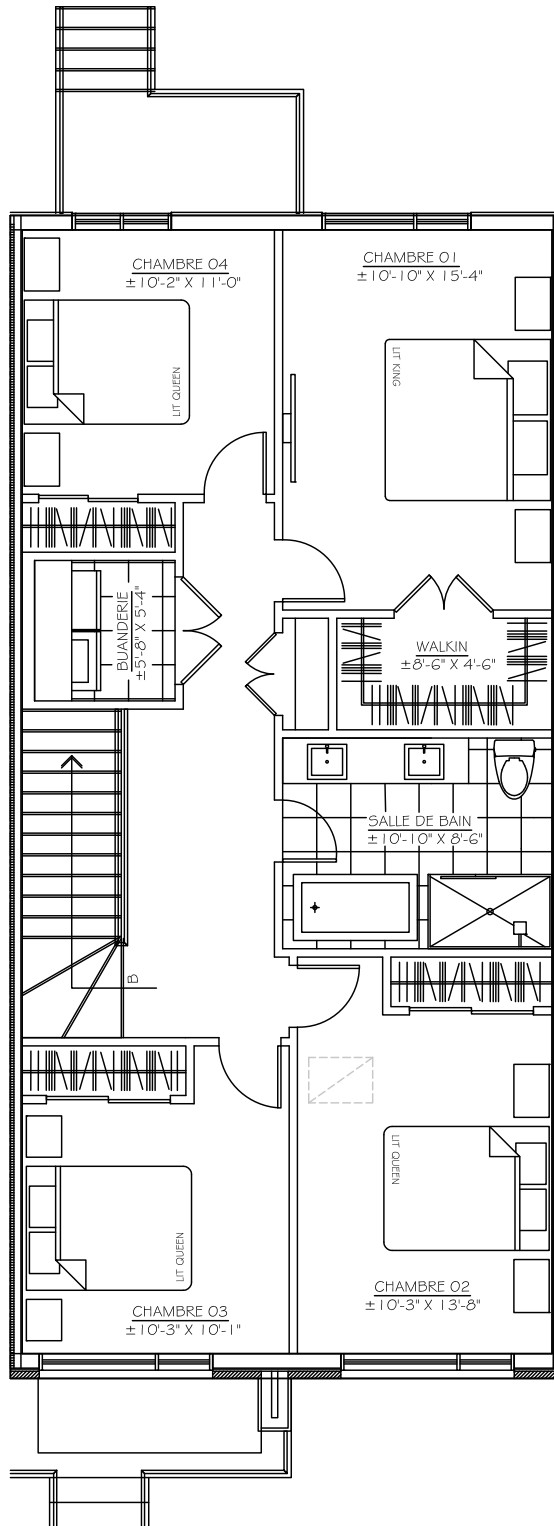
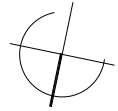
he

UNITÉ 720 - UNIT 720

ÉTAGE - 4 CHAMBRES 1048 pi²
SECOND FLOOR - 4 BEDROOMS 1048 sq. ft.



BOUL. PROVENCHER BLVD.

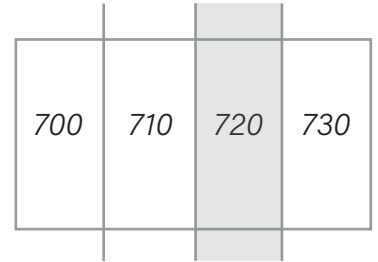


he

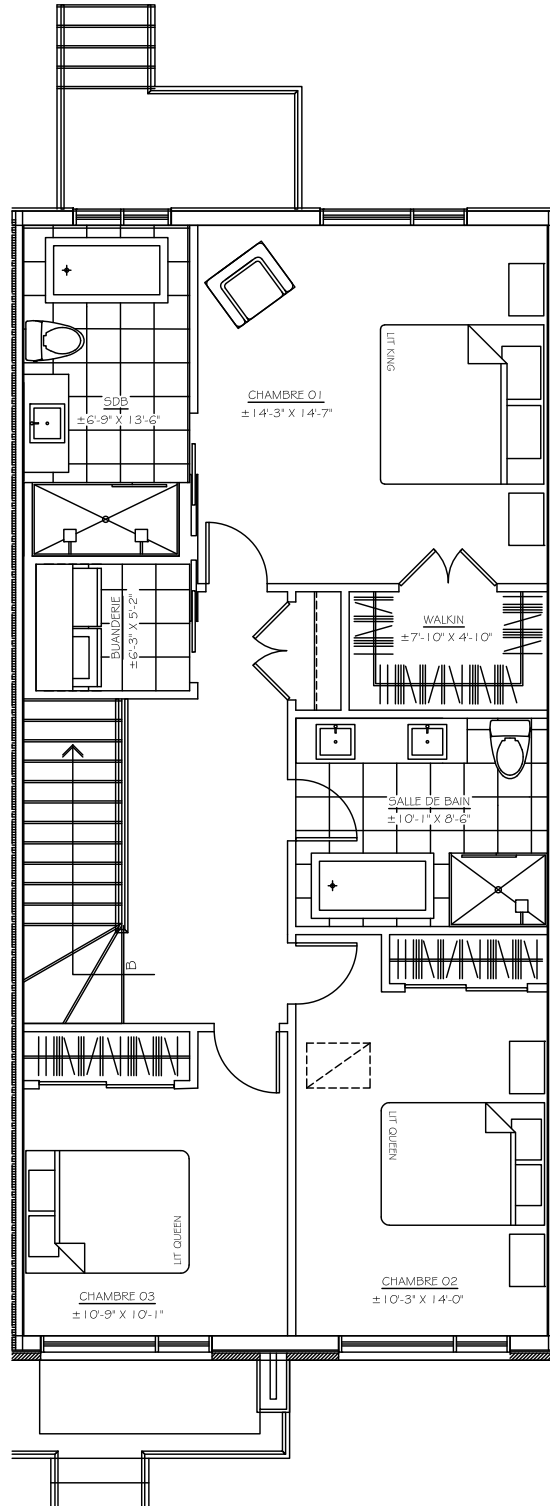
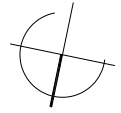
BOUL. PROVENCHER BLVD.

UNITÉ 720 - UNIT 720

ÉTAGE - 3 CHAMBRES (\$) 1048 pi²
SECOND FLOOR - 3 BEDROOMS (\$) 1048 sq. ft.



BOUL. PROVENCHER BLVD.



he