

PROVENCHER
BROSSARD

UNITÉ 700 - UNIT 700

GARAGE: 239 pi² - SOUS-SOL: 811 pi²

GARAGE: 239 sq. ft. - BASEMENT: 811 sq. ft.

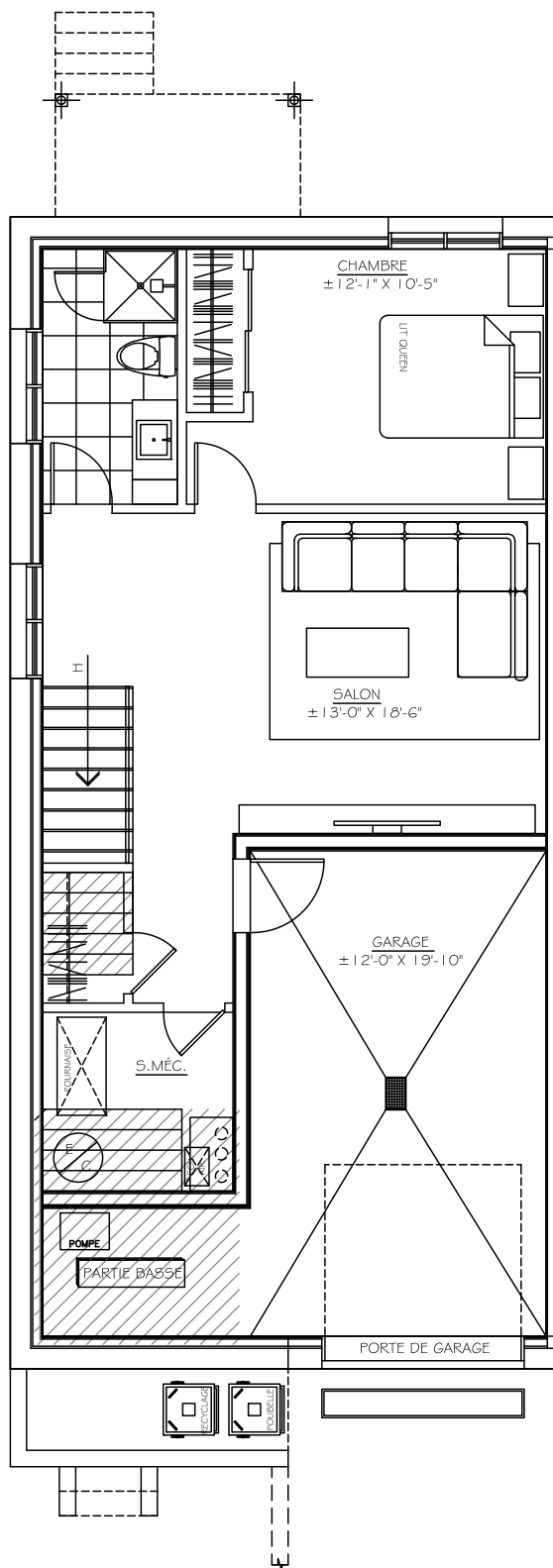
700

710

720

730

BOUL. PROVENCHER BLVD.



he

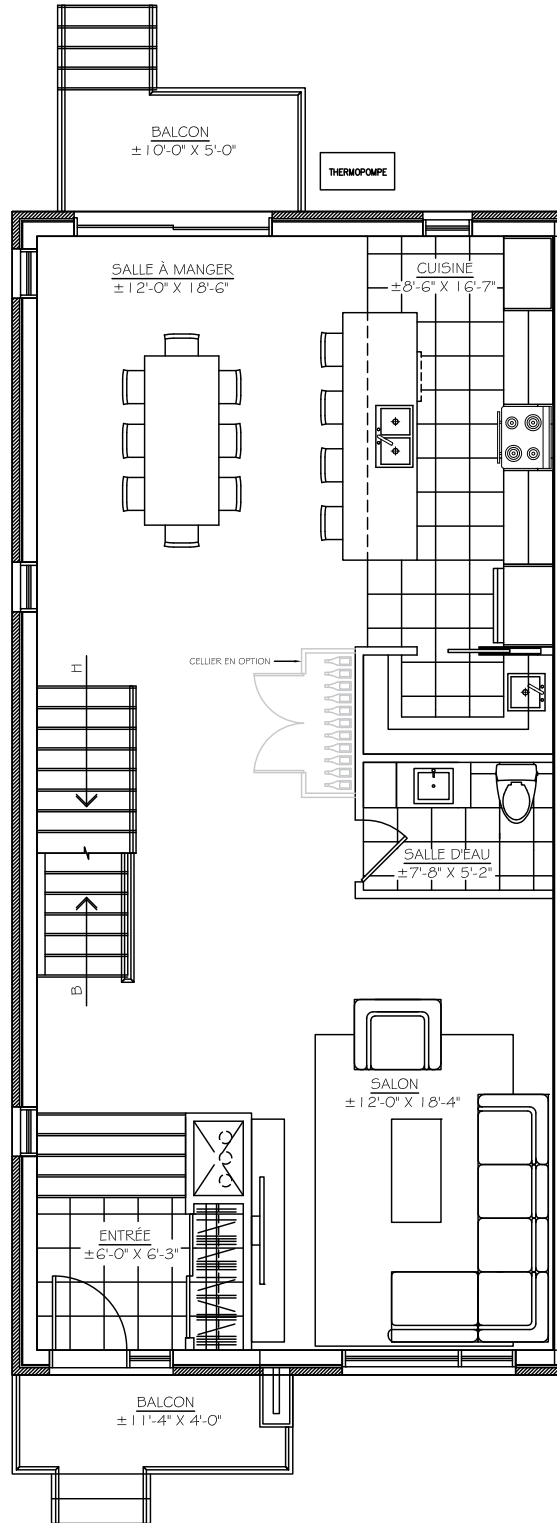
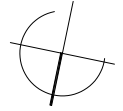
BOUL. PROVENCHER BLVD.

UNITÉ 700 - UNIT 700

REZ-DE-CHAUSSÉE: 1050 pi²
FIRST FLOOR: 1050 sq. ft.

700	710	720	730
-----	-----	-----	-----

BOUL. PROVENCHER BLVD.



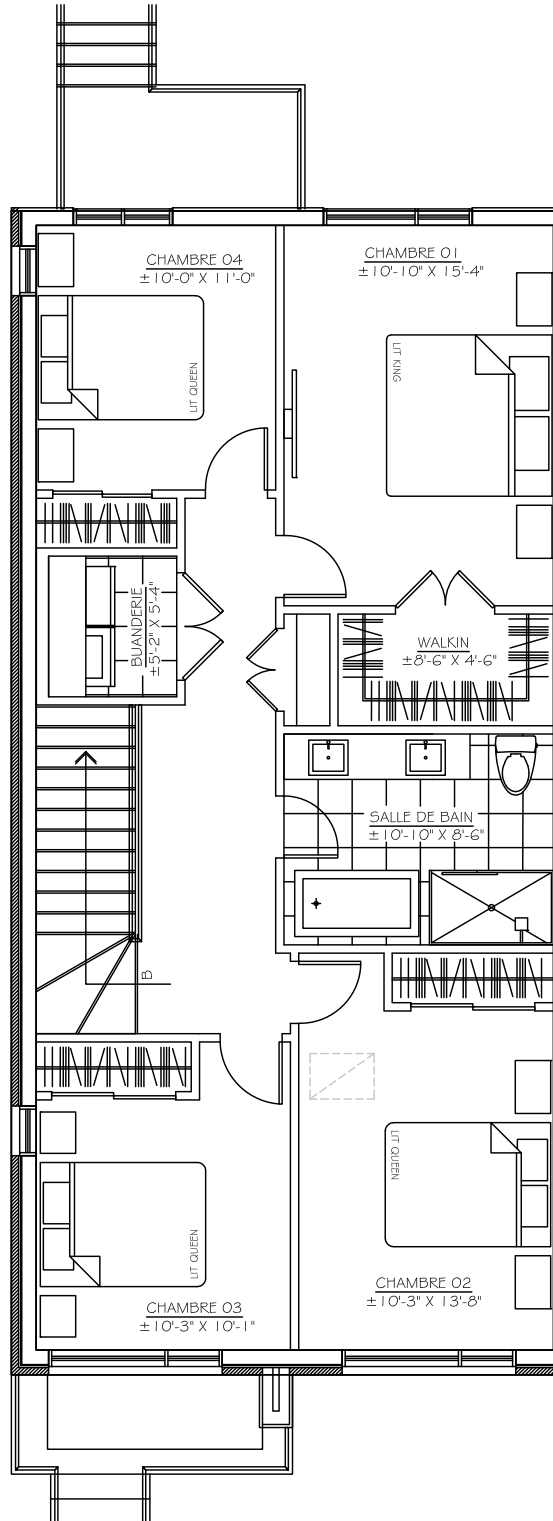
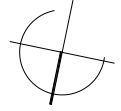
he

UNITÉ 700 - UNIT 700

ÉTAGE - 4 CHAMBRES 1048 pi²
SECOND FLOOR - 4 BEDROOMS 1048 sq. ft.

700	710	720	730
-----	-----	-----	-----

BOUL. PROVENCHER BLVD.



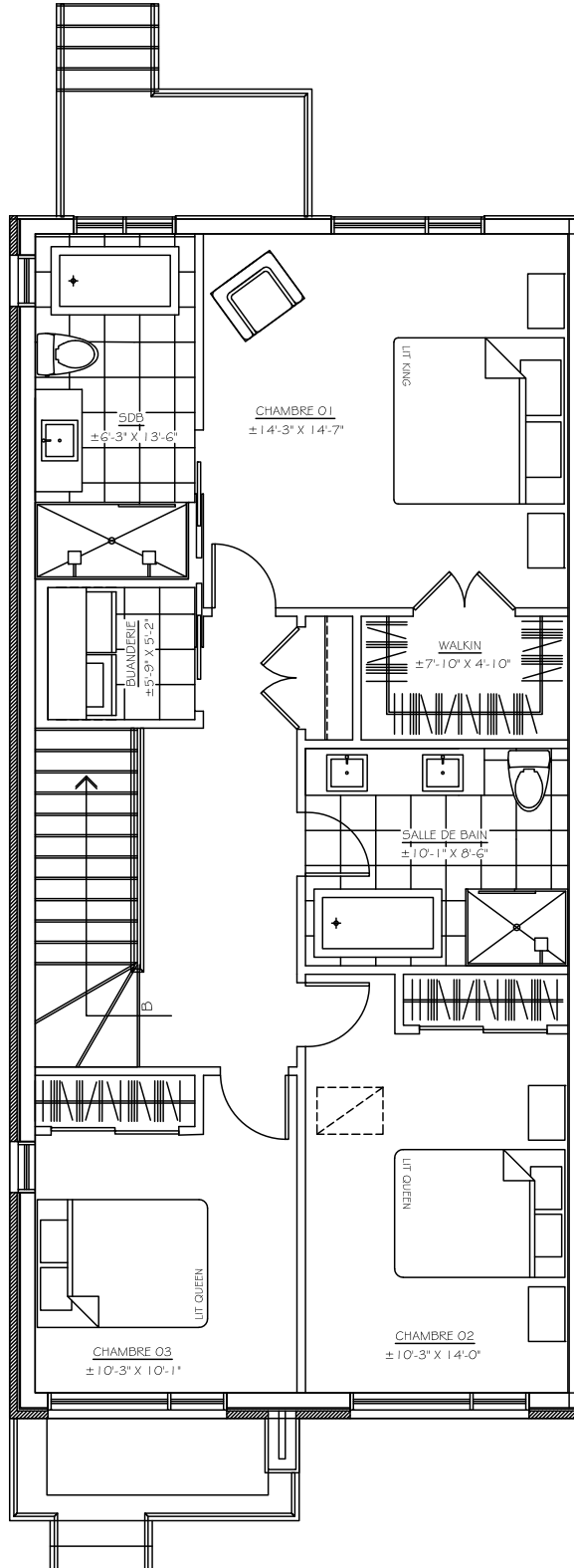
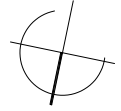
he

UNITÉ 700 - UNIT 700

ÉTAGE - 3 CHAMBRES (\$) 1048 pi²
SECOND FLOOR - 3 BEDROOMS (\$) 1048 sq. ft.

700	710	720	730
-----	-----	-----	-----

BOUL. PROVENCHER BLVD.



he